

**CONTENTS**

USB Port Configuration ..... 2

Network Port Configuration ..... 3

### USB Port Configuration

Often a computer can have multiple USB ports and there isn't an easy way to map a physical port to the logical port other than trying each one when a printer will not print. This will outline that process.

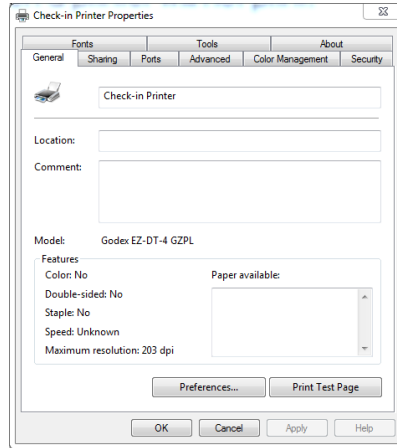


Figure 11 - Printer Properties General Tab

1. If you haven't tried printing open the Printer Properties for the Godex printer select the General tab.
2. Click Print Test Page.
3. If the printer prints a tag with the Windows Logo on it then the printer is working and setup properly.
4. If it does not then continue on with this procedure.

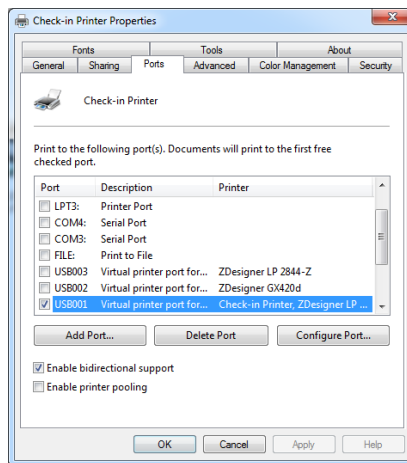


Figure 12 - Printer Properties Port Tab

5. Select the Ports tab.
6. You may see several USB Ports listed.
7. If USB001 is selected then select USB002 and then click Apply.
8. Since you printed a Test Page previously it should still be in the queue ready to print when you select the correct USB port and click Apply.
9. Continue this process with the next printer port until the Printer prints the Test Page (Windows Logo). Once it is done you have selected the correct port and the printer is ready.

### Network Port Configuration

Often a computer can have multiple USB ports and there isn't an easy way to map a physical port to the logical port other than trying each one when a printer will not print. This will outline that process.

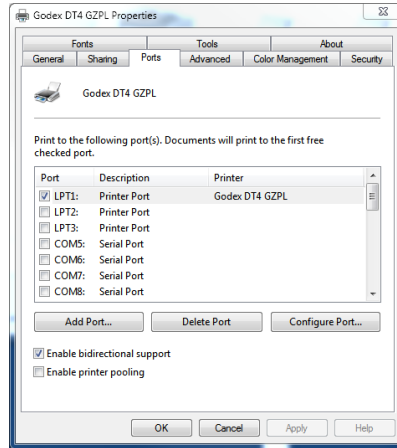


Figure 13 - Printer Properties Ports Tab

1. Open the Printer Properties for the Godex printer then select the Ports tab.

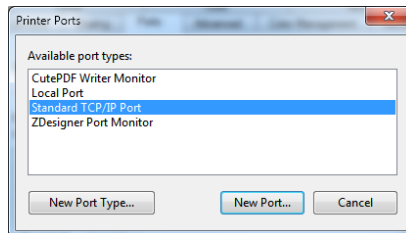


Figure 14 - Printer Ports

2. Select Standard TCP/IP PORT then click Add Port.

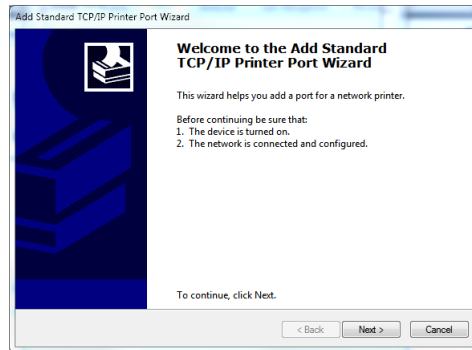


Figure 20 TCP/IP Port Wizard

3. The “Add Standard TCP/IP Printer Port Wizard” window will show. Click the Next button.

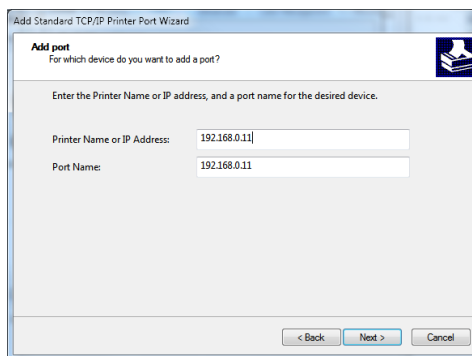


Figure 21 TCP/IP Port Wizard

4. Enter the Printers TCP/IP Address then click Next.

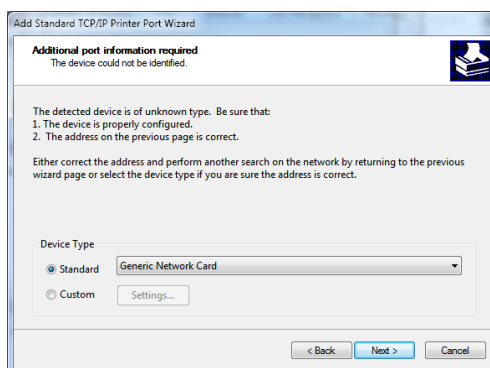


Figure 22 TCP/IP Port Wizard

5. Keep the defaults on the screen then click Next.

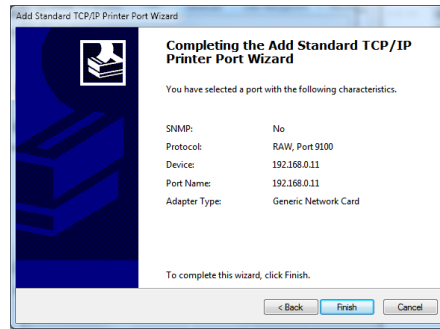


Figure 23 TCP/IP Port Wizard

- Click Finish on the final screen.

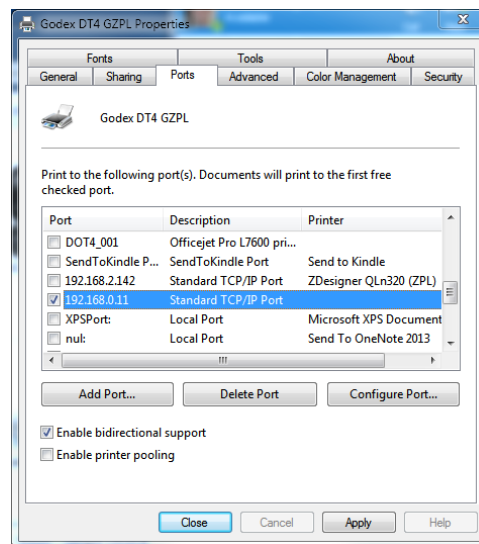


Figure 24 Printer Properties

- Insure that the newly added TCP/IP port is selected in the ports box. Then click Apply. The TCP/IP is now added and printing will work.