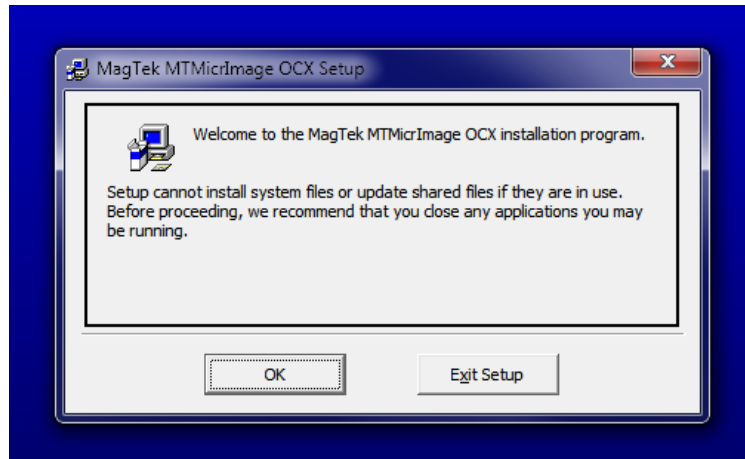


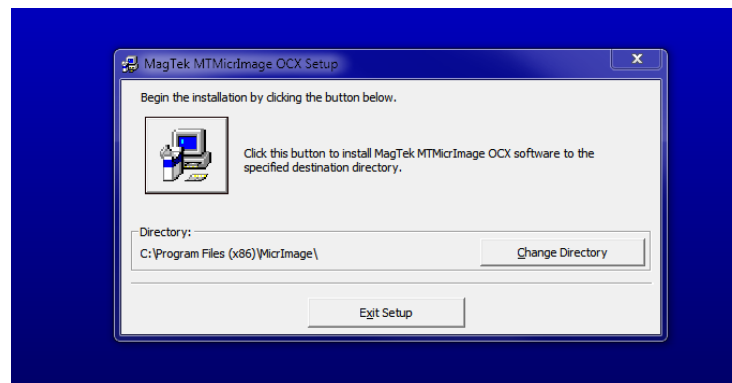
*Magtek Software Installation*

With the installation of the Contributions Application you will need to install the Magtek driver. Begin the installation by extracting the MTMicImage.zip to the computer.

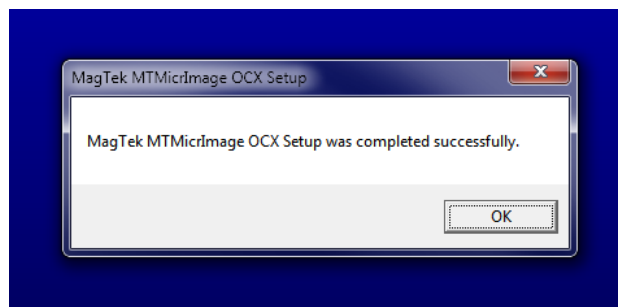
1. In the MTMicImage folder double click the Setup.exe file



2. Click OK.



3. The file path will be shown. Keep the default path.
4. Click on the Computer image to install the software.



5. Click OK when the software is installed.